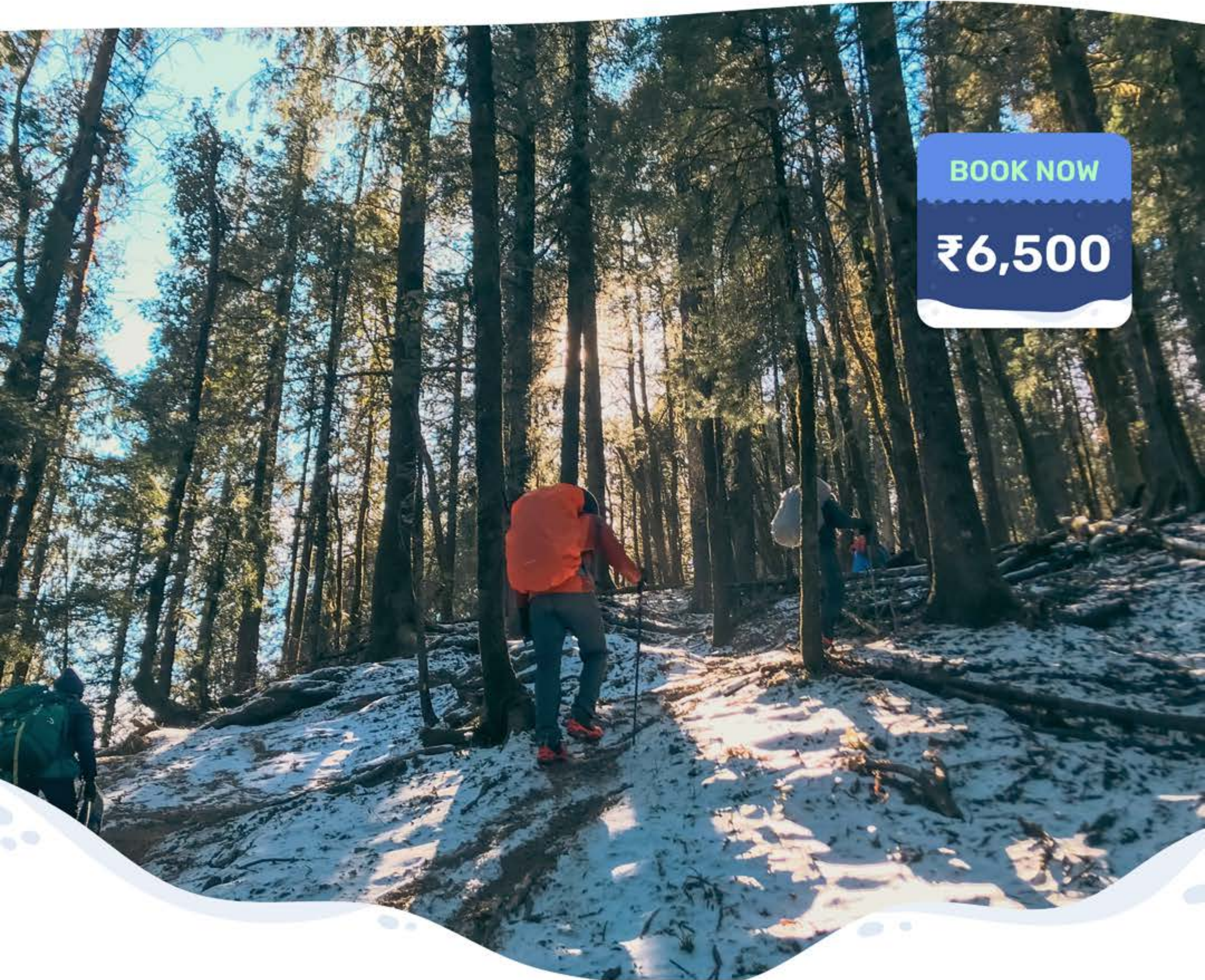




KAILASHRATH TREKS

Kedarkantha Trek

The Perfect Summit for Every Dreamer



BOOK NOW

₹6,500

RECOGNISED BY



INDIAN
MOUNTAINEERING
FOUNDATION

APEX NATIONAL BODY

Brief info



SEASON

December -February



DAYS

5 Days and 4 Nights



BASE CAMP

Sankri, Uttrakhand



DIFFICULTY LEVEL

Moderate

Highlights of this Trek



SNOW PARADISE



JUDA KA TAAL



SUMMIT PUSH



360 DEGREE VIEW FROM THE PEAK



Watch it on Youtube

[Kedarkantha trek | 10 reasons to do | Winter trek](#)

8:13 min



You can participate, if

You are above 12 years of age with a good physical strength and stamina. You should not have any serious medical issue related to Hypertension, Asthma, Diabetes, breathing problems or any other medical conditions which create difficulties for you while trekking.

You should prepare yourself before participating in the trek. You should be able to jog/brisk walk 5 kms in 40 minutes. If you are with a BMI of 30 and above need to get it below 30 before joining the trek.

PREPARATION

Strong physical fitness is a must for any Himalayan Treks. Whenever one is undertaking activities like High Altitude Trekking, make sure that you are preparing yourself for the trek in terms of Aerobic fitness, muscle strength and breathing rhythm. Check our [PREPARATION GUIDE](#) video for more information.

Perks of trekking with Kailashrath



AFFILIATED BY IMF

We are affiliated with the IMF and hold a 10+ Years of Experience organising high altitude Himalayan treks.



PROFESSIONAL GUIDES AND SUPPORT TEAM

Our expert guides are quite experienced and are trained from the most famous mountaineering institutes and are also First Aid certified and equipped with the latest safety gear.



HIGH GRADE EQUIPMENTS

Safety of the participants is our utmost priority so we provide High Quality Alpine Tents, Sleeping Bag, Gaiters and Microspikes. We also provide rest trekking gear on rental basis at base camp.



HASSLE FREE BOOKING PROCESS

We take the booking directly from the customers. No third party is involved before or after the booking process.



PIONEERED IN ORGANISING TREK

With consistent effort and professionalism, we have offered treks to more than 30,000 trekkers with almost 4000+ reviews on Social Media.



ACCLIMATISATION DAY

Kailashrath Treks ensures your safety with a dedicated acclimatization day—helping you adapt to altitude and enjoy a safer, smoother Himalayan adventure.



Detailed Itinerary



DAY 1: DEPARTURE FROM DEHRADUN RAILWAY STATION AND ARRIVAL IN SANKRI

↔ N/A ⌚ N/A ↗ 6400 Ft 📶 Full Network

- Your adventure begins with a scenic drive from Dehradun Railway Station to Sankri, a serene village nestled in the Uttarkashi district.
- Transport will be arranged from Dehradun to Sankri. The journey starts at 7 AM sharp. This journey costs ₹ 800 per trekker (one-way). You can opt to reserve a seat while booking your trek.
- The journey to Sankri is very scenic and mesmerizing, with especially the last part in which we pass through Govind life sanctuary.
- Once at Sankri, members will undergo the registration process by 5 PM and will attend the briefing for the trek at 6 PM followed by distribution of items like Rucksack, Gaiters, Microspikes and Trekking sticks.
- Overnight at Sankri base camp.





DAY 2 : SANKRI TO JUDA KA TALAB

↔ 4.5 Km ⌚ 5 Hr ↗ 9,100 Ft 📶 No Network

- Start early after breakfast for the first campsite Juda Ka Taal from Sankri.
- The trek distance is just 5 Kms and is easy all the way till Juda Ka Taal campsite.
- Spot woodpeckers on the way as they are pretty common in the region.
- Encounter a larger green meadow on the way, which is generally used as lunch point for the trekkers.
- Swargarohini peak can be seen from here. The trek is easy and full of amazing views.
- Overnight stay at Juda Ka Taal.



DAY 3 : JUDA KA TALAB TO KEDARKANTHA BASECAMP

↔ 3 Km ⌚ 4 Hr ↗ 10,100 Ft 📶 No Network

- The trek from Juda Ka Tal campsite to Kedarkantha base camp is short but starts early to suit against the snow conditions.
- As soon as we start the trek, Juda Ka Tal comes enroute. The lake remains almost frozen at this point of the year.
- It takes around 3-4 hours to reach Kedarkantha base camp from the lake.
- At night, the snow-clad mountain peaks shine bright as the moon, and we will clearly see Kedarkantha from the campsite.
- Sleep early to get ready for the early summit push for the peak.



DAY 4 : KEDARKANTHA BASE – KEDARKANTHA PEAK

– HARGAON

↔ 8 Km ⌚ 12 Hr ↗ 12,500 Ft 📶 No Network

- Start the day early with a wake up call at 2:30 AM for the summit push.
- The trek is moderate as it gets steep at a few points. The trek commences at 3 AM with head torches at a slow moving pace towards the summit.
- The way light comes and what happens in the sky is amazing, a variety of colours you will see in the sky.
- The summit offers some of the most spectacular views of Yamunotri and Gangotri Ranges.
- At the summit we will spend some time and return back to Kedarkantha base camp for Hot Lunch.
- After some short break, participants will continue their descent till Hargaon campsite which takes almost a couple of hours.

DAY 5 : HARGAON – SANKRI

↔ 4 Km ⌚ 4 Hr ↗ 8,960 Ft 📶 Moderate Network

- The last day of the trek is easy with snow slopes to descend. It usually takes around 3-4 hours to descend from Hargaon to Sankri.
- We reach Sankri by 1 PM and post lunch we take departure for Dehradun.
- Arrival at Dehradun railway station by 10 PM.

Altitude Map



● Campsite - - - Ascend - - - Descend

How to reach Base camp

OPTION 1: KAILASHRATH'S PRE-ARRANGED TRANSPORT (RECOMMENDED)

Mode

Shared Tempo Traveller or SUV arranged by Kailashrath Treks

Route

Dehradun Railway Station to Sankri Basecamp.

Pickup Location

Dehradun Railway Station

Departure Time

Early morning (At 7:00 AM)

Travel Time

09 -10 Hr

Cost / Person for One way

₹800 + 5% GST

OPTION 2: BY PUBLIC TRANSPORT (BUDGET-FRIENDLY)

Mode

Shared jeep or bus from Rishikesh to Joshimath

Step 1 : Take an early morning bus or shared jeep from Dehradun ISBT to Purola (6-7 hrs).

Step 2 : From Purola, board another shared jeep or local bus to Sankri (4 hrs).

Bus Stand

Dehradun ISBT

Departure Time

Early morning (At 7:00 AM)

Travel Time

10-12 hours

OPTION 3: BY PRIVATE CAR OR TAXI (COMFORTABLE & FLEXIBLE)

Mode

Private Car or Taxi

Route

Dehradun - Mussoorie - Nainbagh - Purola - Mori - Sankri

Cost

₹6,000-₹7,000 depending on vehicle size and season

Things to carry



ACCESSORIES

- Woollen Cap
- Sun Cap
- Gloves
- Sunglasses
- Head Torch
- Lunch Box
- Insulated Water Bottle
- Poncho



CLOTHING

- -5 Degree Jacket
- Fleece (Mid Layer)
- Thermal Base Layer
- 2 X Dry-Fit T-Shirts
- 2 X Quick Dry Trek Pants



ESSENTIALS

- Power Bank
- Toiletries
- Crepe Bandage
- Pain Relief Spray
- Blister Tape
- Personal Medical Kit
- Personal Garbage Bag



FOOTWEAR

- Water Proof High Ankle Trek Shoes
- 3 X Socks
- 1 X Woollen Socks



Equipments on rent

At Kailashrath Treks, we provide you a few trek gears on rental basis, which can be booked prior to confirm. Below are the details and link.

A security deposit will have to be deposited [cash/online] on arrival at base camp to ensure the safekeeping of the gear which will be refundable once the gear is received back.

PRODUCT	RENT FOR ENTIRE TREK	DEPOSIT REFUNDABLE
---------	-------------------------	-----------------------

1. High Ankle Trekking Shoes



₹750

₹2,000

2. Poncho



₹200

₹500

3. Trekking Bag



₹200

₹1,000

4. Snow Gloves



₹200

₹800

5. Headlamp



₹200

₹800

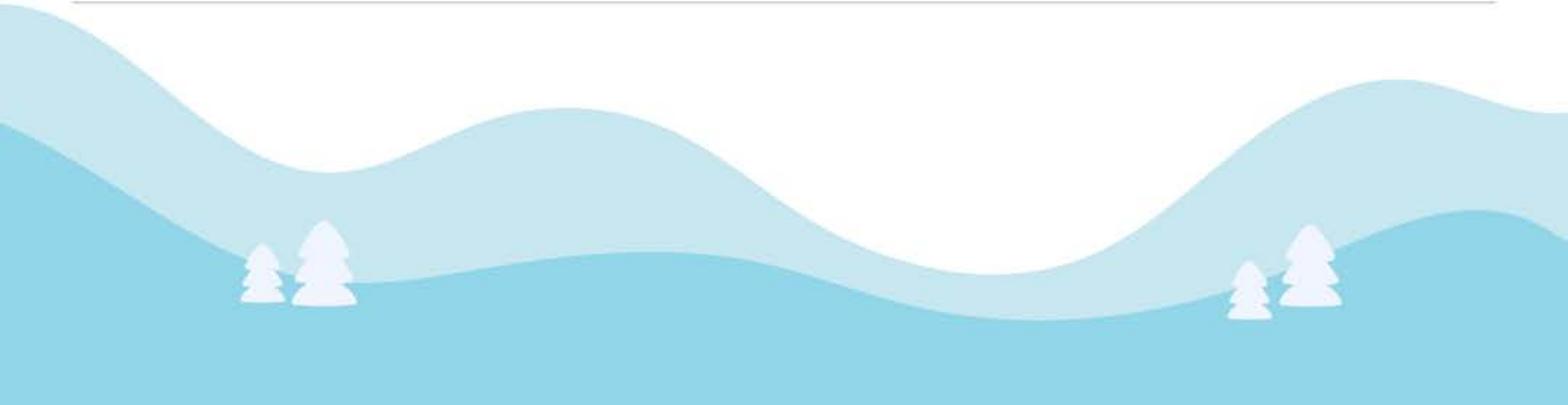
Note : AAA Batteries not included.

6. Trek Pole



₹200

₹500



Documents Required

- 1. Medical Certificate** should be signed by a registered MBBS doctor and should have the seal of the doctor.
- 2. Original and photocopy of Aadhar card** required. In case of Foreign Nationals Passport and Visa would be required.
- 3. NOC form** with participant signature
- 4. Passport sized photograph** - Two in number

Download the [MEDICAL CERTIFICATE](#) here.

Inclusions

1. ACCOMODATIONS

Double sharing basis at higher camps. Triple/ Quad sharing basis on the first day at basecamp.

2. CLOAK ROOM

Members can keep their extra luggage at base camp.

3. MEALS

Breakfast, lunch, snacks and dinner are included. We provide simple, nutritious Veg/Jain food on all days of the trek

4. CAMPING CHARGES

All trekking permits and forest camping charges are included.

5. GAITERS & MICROSPIKES

Gaiters help against snow entering from the side of the shoes and microspikes for extra grip.

6. TREKKING EQUIPMENT

High-quality tents and sleeping bags will be available at all the camps. Sleeping bags can withstand temperatures as low as -10 °C.

7. SAFETY EQUIPMENT AND EMERGENCY

First aid kit, oxygen cylinders, oximeter, etc. will be with the guide/trek leader and at the campsite as well to deal with emergencies.

8. EXPERT TREK LEADERS

All our trek leaders are at least qualified in Advanced mountaineering and first aid courses.

9. EXPERT TREK SUPPORT TEAM

The mountain staff on this trek consists of experienced cooks, helpers, and porters/horsemen.

Exclusions

- Transportation charges to reach base camp and back
- Backpack offloading charges
- Cost of Emergency
- Any personal expense.
- GST 5%

Food Menu

We provide Hygienic, Freshly cooked food throughout this trek with dedicated and experienced cooking staff who will accompany with us throughout this trek.

We have carefully curated the complete menu for this trek which will provide sufficient nutrition and energy to complete this trek a ease.

[CLICK HERE](#) to view our menu curated for this trek.

How To Book

BOOKING & CANCELLATION POLICY

Members can book the trek directly from www.kailashrath.com by paying an advance of ₹ 2,000 per person. Balance amount has to be paid 15 days prior to the event date.

- **Advance amount** of ₹2,000 is non refundable. However in case of cancellation before 15 days of the event date, members get a credit voucher, which will have a validity of six months and will be transferable too (only for new bookings). The voucher will not be adjusted to the balance amount in case of group booking.
- **Balance amount** has to be paid two weeks prior to the event date. Failure to pay the balance payment will lead to cancellation. Booking Ticket will be sent once the balance payment is received.
- **Cancellation requests** will be entertained only via email (kailashrathtreks@gmail.com). No refund of the entire amount when cancelling within 15 days of the trek.

Note : If a trek is called off at the last moment due to a natural calamity/unforeseen circumstances (like rains, earthquake, landslides, strike, bandh, pandemic etc) no amount will be refunded. According to the situation, we will be providing some alternatives.

Fixed Departure

- The Fixed Departure for this trek is available in **December, January and February** month which is considered the best time for this trek.
- The Fixed Departure will be executed irrespective of the batch size. Maximum Batch size: **20 Person**
- The chosen date is the reporting date at base camp.
- To know more about the dates and the seat status, please [CLICK HERE](#).

Backpack Offloading

If you're unable to carry your backpack, don't worry! We at Kailashrath Treks offer backpack offloading services.

Members who wish to offload their backpack can utilize the offloading service for a charge of ₹1,600/- for the entire trek. Please note that if a member withdraws from the trek at any point, the charges will not be refunded.

Members need to confirm at least one week before their event date and will need to make advance payment to avail the services.

It's recommended that those using this service, should bring a daypack (10 liters) for essentials like a lunchbox, water bottle, poncho, toiletries, and a jacket.

FAQ

Didn't find what you're looking for in this Brochure?

Check out our [FREQUENTLY ASKED QUESTIONS](#) on our website. Or feel free to get in touch with us with below contact details.

Get in touch

WHATSAPP



+91 98051 55151

+91 77570 08998.

FOLLOW US



/ Kailashrathtreks